



Polished NITO is a porcelain tile with a lustrous finish.

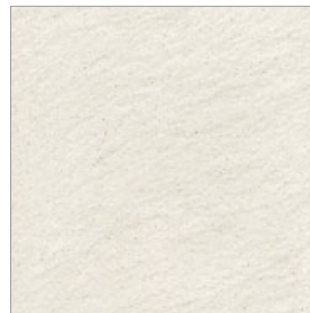
Polished is suitable for prestigious developments where the luxury of a high gloss surface is an important part of the designer's aesthetic. Our polished tiles feature contemporary neutral shades that complement retail, residential and commercial interior themes. The Nito polished collection co-ordinates with the Nito matt and rustic collections for a seamless transition.



melody gris
300 x 600mm 600 x 600mm



melody nero
300 x 600mm 600 x 600mm



super white
300 x 600mm 600 x 600mm



beige
600 x 600mm


test results:


resistance to
thermal shock


frost
resistance


surface abrasion
resistance PEI
(glazed tiles)


moisture
expansion
(mm/m)


stain
resistance


modulus of
rupture & breaking
strength


water
absorption


co-efficient of
linear or thermal
expansion (M/K)